



ANNUAL  
REPORT  
**2016**

# *onward & upward*

METHODIST  
**Children's Home**  
SOCIETY

# MISSION

Methodist Children's Home Society provides individualized treatment, care, advocacy and permanency to children and families impacted by childhood trauma.

# VISION

Building a community where every child and family has a safer and brighter future.

# CORE VALUES

- Celebrate the worth, diversity and dignity of every youth and family.
- Work collectively and through partnerships to provide the best care possible.
- Give voice to our youth and families who are voiceless.
- Commit to results.
- Make a positive impact on our communities.

He waved his arms back and forth in the fresh snow, starting slowly but then getting faster and faster, until he couldn't breathe. With snow flying everywhere, he began crying. As if the weight of the world came crashing down, Dwayne's snow angel had turned into a huge, empty hole.

The grief and turmoil Dwayne was going through is something we see in all our children and families. The snow angels he used to create with his two younger sisters, until all three were removed from their homes, no longer mattered. Not being able to protect his sisters, his sadness, confusion and anger had become unbearable. As he lay in the snow, he told me all he wanted to do was melt away with the snow forever.

Yet, because of you, Dwayne found comfort and care. Your support allowed us to care for over 200 children through our foster care, adoption, residential and independent living programs. Your support ensured that our children experienced good health and healing, new life and social skills and hope and reason to believe again.



2016 was a wonderful year as we continued to restructure our programs and services, including foster care, intensive therapy, life and social skills, education services, medical services, adoption, case management services and so much more—all to better serve our children and families. We opened a new cottage and laid the foundation for major campus renovations in 2017 as well as completed our 2016 Strategic Plan. Your support mattered.

We can't wait for 2017, our 100 year anniversary, because we know how many more children and families need us and how much more we have to do. It's humbling to think of the incredible legacy that's been built in the last century. We wouldn't be here today without the incredible dedication and support from so many of you and our community partners, all of whom have ensured our second century of caring for some of Michigan's most fragile children and families. Thank you for your support.

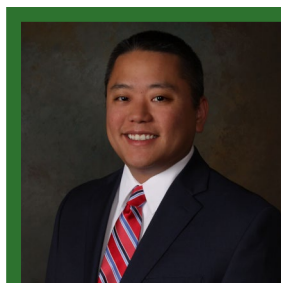
It's been a year since Dwayne was making those snow angels. While this past year was his hardest year yet, his grief eventually turned into joy as he learned his past did not define his future. And, a few weeks before Christmas, he went to a new family, reuniting with his sisters. He was ready to begin the childhood that was rightfully his.

Dwayne's story reminds us that every child deserves snow angels and snowmen, but mostly importantly, a childhood filled with love and joy, hopes and dreams. Thank you for restoring those childhoods for Dwayne and the hundreds of children we served last year.

Sincerely,



Kevin Roach, MSW  
Chief Executive Officer  
kroach@mchsmi.org  
313-530-0449

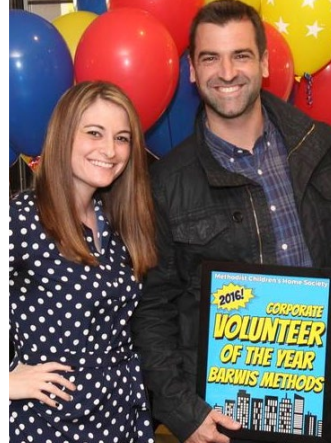






## ANNUAL DINNER

In May 2016, we thanked our donors, volunteers and advocates celebrating with a superhero theme — complete with capes!



## VOLUNTEER OF THE YEAR

Barwis Methods was honored as Corporate Volunteer of the Year, and Mary Calhoun as Individual Volunteer of the Year.

2016

# HIGHLIGHTS

Grew  
on-campus  
residency 22.9%  
providing an additional  
2,910 NIGHTS  
of sleep & safety to  
children who have  
survived abuse & neglect



## GOLF CLASSIC, PRESENTED BY PHARMASCRIP

In June 2016, we revived a classic event and enjoyed an afternoon of fun and golfing “fore” the kids — and raised \$30,000! Thanks so much to our sponsors and donors, including DTE Energy, the Brice Group at Graystone Consulting and more.

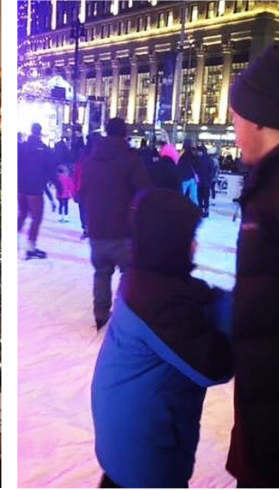
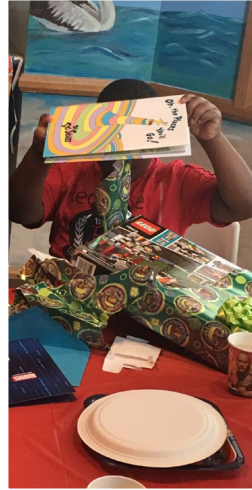




Increased agency  
revenue **12.3%**

Created **22 NEW JOBS**  
to provide more support  
to children & families

Developed plan for  
**INNOVATIVE, NEW SPACES**  
FOR OUR CHILDREN & FAMILIES  
to be completed in 2017  
**Capital Improvements:**  
*Lasting Roots, Growing Legacy.*



## BIRTHDAY CLUB

In 2016, we kicked off monthly birthday parties for our kids. Thanks to our donors who came out and celebrated with us.

## CHRISTMAS

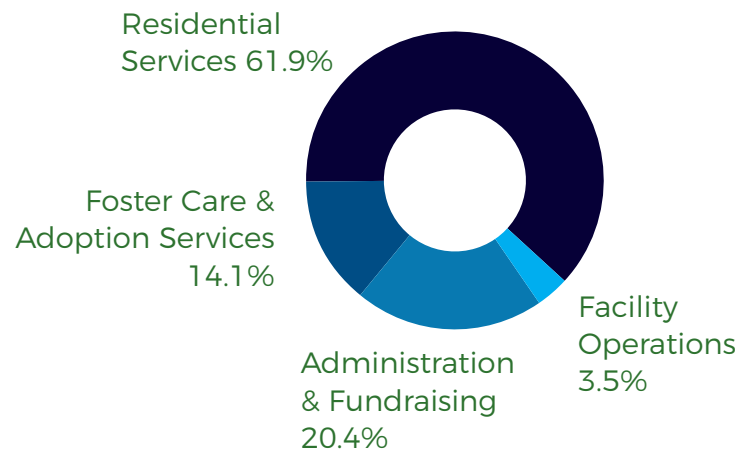
Because of your generous contributions, our kids enjoyed presents and parties all season long. You made their holidays merry and bright!

## CHILD ABUSE PREVENTION MONTH

In April 2016, our community supporters displayed pinwheels to spread awareness.

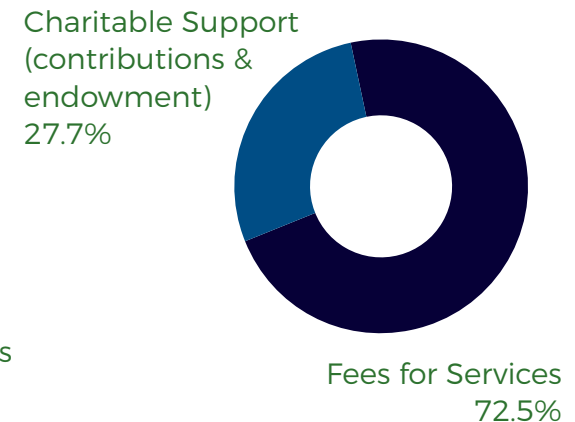
# 2016 Financials

## Expenditures



2016 Expenditures \$8,269,686

## Revenue



2016 Revenue \$8,269,686



# kids served

## Residential Care Program

In 2016, **84** children resided on our campus and gained new hope through our Residential Care Program, receiving individualized therapy and specialized education while practicing social and life skills.

**12**

AVERAGE AGE OF A CHILD ADMITTED TO RESIDENTIAL PROGRAM

**912**  
days

AVERAGE TIME SPENT IN FOSTER CARE PRIOR TO ADMISSION TO MCHS

**6**  
years

APPROXIMATE TIME WITH CHILD PROTECTIVE SERVICES INVOLVEMENT

**67.8%**

DO NOT KNOW THE WHEREABOUTS OF THEIR BIRTH FATHER

Most children look forward to their birthdays, but for children in the child welfare system, their birthday marks another year without a family.

**38%**

CELEBRATED A BIRTHDAY AT MCHS

**22.6%**

CELEBRATED 2+ BIRTHDAYS AT MCHS

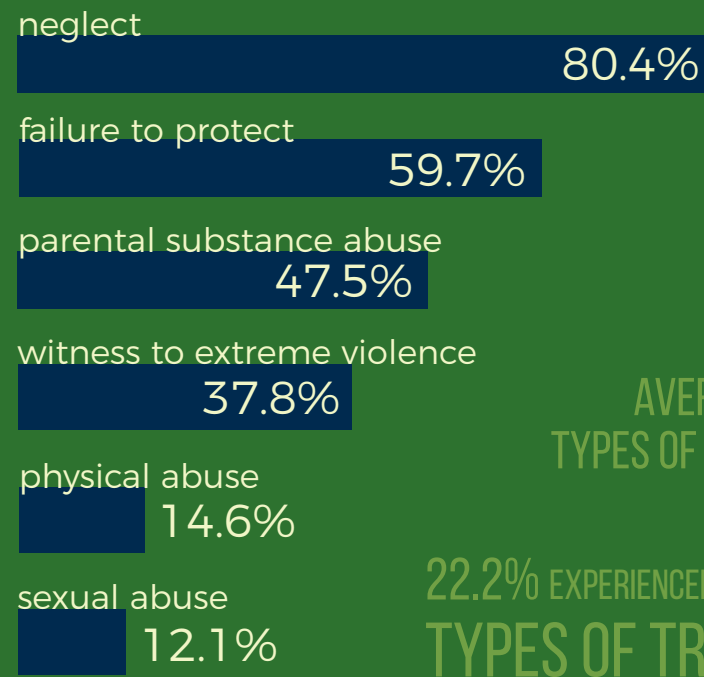
Shaan's first days attending MCHS' on-campus school were littered with broken pencils and shards of broken window glass. Each lesson was jabbed with outbursts and punctuated with profanity as Shaan tried to make sense of his world.

At 13 years old, Shaan had been living in the foster care system for almost as long as he could remember – almost. One of his oldest memories was of his mother letting his hand go at the shopping mall. She kept walking and never looked back. He remembered wandering past unfamiliar store fronts. Shaan didn't understand why she left, but he thought it must have been something he had done.

Five years later and after four different families giving up on him, Shaan came to live at MCHS. He was several grade levels behind and had given up ever making it to high school. Yet, the teachers and staff at MCHS were unlike any he had encountered. Each day, they kept working with him, replacing torn worksheets and broken pencils. And one day, it finally started to make sense to Shaan. Numbers started to come together and the words on the pages were no longer a jumbled mess.

Soon, the success Shaan was experiencing in the classroom helped him understand it wasn't his fault his mom left him. And some day, there would be a family waiting for him. He couldn't wait to show them how smart he was!

## TYPES OF TRAUMA

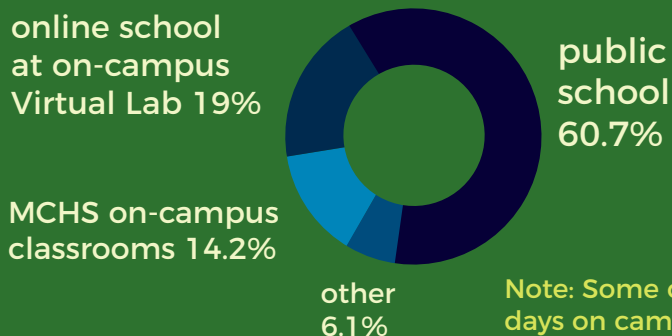


AVERAGE 2  
TYPES OF TRAUMA

22.2% EXPERIENCED 3+  
TYPES OF TRAUMA

## ATTENDING SCHOOL

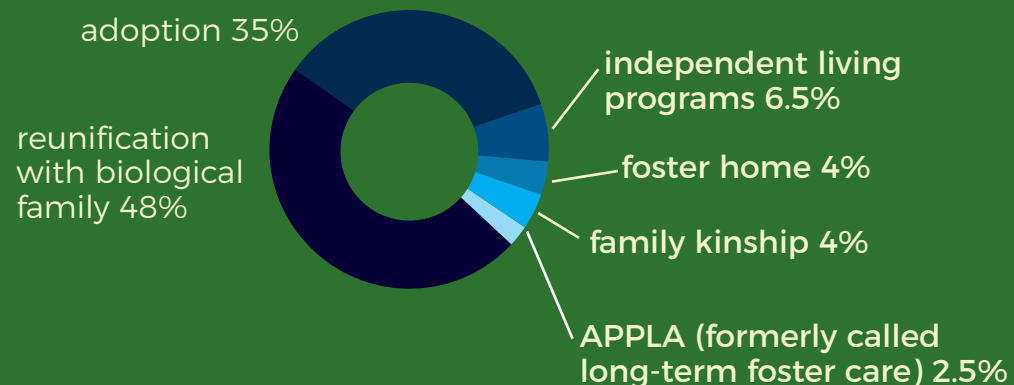
Some children in our residential program focussed on learning classroom behavior or class credit recovery on campus at MCHS, and others attended public school.



Note: Some children split school days on campus and in public school.

## PERMANENCY PLANS

the goal for a child's "forever home"



*residential care by the numbers*



# kids served

At 9 years old, Julia was used to taking care of her 2-year-old brother Jamare by herself. She had been doing it since she could remember and was getting good at cooking a few meals, even though she had to stand on her tiptoes to reach the stovetop. With her parents working constantly, Jamare was her responsibility when she finished school, every day of the week.

One winter day, the State showed up and removed both Julia and Jamare after feeling how cold the house was and seeing the empty refrigerator. Luckily, MCHS had a foster family ready to care for both children. MCHS staff provided support to the children, making sure their educational, medical and therapeutic needs were taken care of and coordinated with the parents to reunify the family. While Julia and Jamare's parents were upset and frustrated, they eventually began to understand and take responsibility for their children's removal. Visits started rocky, but soon improved as additional resources were provided. The family grew closer together.

Several months later, with the support of MCHS and the foster family, the family reunified. Julia was able to enjoy school and joined the dance club as well as the basketball team with the burden of caring for Jamare gone. The last meal Julia cooked was for her mother on her birthday, after her father showed her how to flip pancakes.

## Foster Care & Adoption

In 2016, our foster and adoptive families grew their families with us, giving **82** children a caring place to call home through foster care and **24** children a forever home through adoption.

64

OF THOSE CHILDREN WERE  
UNDER THE AGE OF 10

6

OF THOSE CHILDREN WERE LESS  
THAN 1 YEAR OLD

5

AVERAGE AGE OF A CHILD IN MCHS  
FOSTER CARE

547  
days

AVERAGE TIME SPENT IN THE  
FOSTER CARE SYSTEM

54%

DO NOT KNOW THE WHEREABOUTS  
OF THEIR BIRTH FATHER

25%

HAVE PARENTS WHO ARE  
INCARCERATED





## Transitional Living Program

In 2016, **13** young people overcame their past and reclaimed their future, branching out and learning life skills through our Transitional Living Programs, including Independent Living Plus and Young Adult Voluntary Foster Care.

**17.7**

AVERAGE AGE OF YOUNG PEOPLE IN  
TRANSITIONAL LIVING PROGRAMS

**6.4**  
years

APPROXIMATE TIME SPENT IN CHILD WELFARE  
SYSTEM OR WITH CPS INVOLVEMENT

## TYPES OF TRAUMA

neglect

65.4%

home violence/extreme violence

50%

parental substance abuse

45.2%

physical abuse

41.6%

sexual abuse

21.4%

psychological abuse

7%

domestic violence

2%

## PERMANENCY PLANS

the goal for a child's "forever home"

reunification  
with biological  
family 55%



adoption 40.2%

APPLA (formerly called  
long-term foster care) 4.8%

*foster care & adoption by the numbers*



**David Bennett**, President  
**Dr. Douglas Ross**, Vice President  
**Christine Weemhoff**, Treasurer  
**Carrie Russell**, Secretary  
 Rev. William Amundsen  
 Rev. Dr. Charles Boayue  
 Peter Bowen  
 Murray Brown  
 Marianne Conner, CPA  
 Steven Docsa

Fritz Esch, Ph.D.  
 William Johnson  
 Peter Lenz  
 Steven Lett, Esq.  
 Peter Morse  
 Eric Pelton, Esq.  
 Tom Wegehaupt  
 Neil Wester  
 Ruth Whaley

On January 20, 1917, our founders saw a need and had a vision: to give abused and neglected children a safe and loving place to call home.

Over the years, countless children have come through our doors. With our dedicated staff and volunteers, and your donor support, we will continue to grow and meet the needs of the children who need us most.

In 2017, we will celebrate 100 years of service. With your help, support and generous gifts, MCHS will last another 100 years.

**David Bennett**  
**Board President**

## *leadership team*

**Brooke Adams**  
 Chief Development Officer

**Kyra Bradley, MA, LLPC**  
 Director of Residential Services

**David Miller, CPA, MSA**  
 Chief Financial Officer

**Amy DesRocher, MA, LPC**  
 Director of Clinical Services

**Kevin Roach, MSW**  
 Chief Executive Officer

**Ebony Smettler, LLMSW**  
 Director of Child Welfare Programs

## 2017 STRATEGIC PLAN

**STRATEGY 1:** By implementing nontraditional, yet research-based individualized care practices, MCHS provides comprehensive and evidence-based treatment and aftercare to children and families throughout all of the agency's programs and services.

**STRATEGY 2:** MCHS diversifies treatment programming and child welfare services to serve more youth and families in southeast Michigan through behavioral health services, in-home programming and expansion of transitional living options.

**STRATEGY 3:** Through completion of a capital improvements project and implementation of volunteer programs, MCHS strengthens programs and services by investing in systems and infrastructure to benefit children, families and staff.

**STRATEGY 4:** MCHS enhances fund development, marketing and community relations functions to increase and diversify funding sources while also spreading awareness and advocating on behalf of children and families throughout Michigan.



## 2017 CENTENNIAL CAMPUS IMPROVEMENTS

# *lasting roots, growing legacy*

This milestone project was designed to directly impact the children and families we serve, creating innovative, new spaces where our kids can learn, heal and play, and our staff and programs can reach new heights in fostering growth, recovery and new beginnings. **You can be a part of it with the rare opportunity to leave a lasting mark on MCHS, standing tall alongside us for the next 100 years.**

### Specialized Education

Kresge Hall will offer our children a chance to reclaim their education after so many years of being swept up by the turmoil of trauma and abuse. Completely renovated and reimagined classrooms and specialized learning areas designed to fit our kids' unique needs will allow our students enhanced opportunities to excel academically.

### Recreation

Our kids will enjoy more fun spaces where they can play, explore their imaginations and spend time with peers. With renovations to our outdoor spaces as well as indoor recreational areas, our kids will finally be able to embrace the simple joys of childhood.

### Clinical & Therapeutic Services

The boys in our residential program will be provided with more safe spaces to process their trauma, overcome their past and embrace their future through therapies such as clinical, sensory, recreational and music. With more space to work with our clinical team, our children can learn, grow and make new beginnings.

### Foster Care & Adoption

We will expand our foster care and adoption spaces, creating inviting, home-like settings where our children and potential foster and adoptive parents can make lifelong memories bonding with the newest members of their family.



Your legacy can live on at MCHS.

Please contact Chief Development Officer Brooke Adams to discuss sponsorship opportunities.

313-531-9464  
[badams@mchsmi.org](mailto:badams@mchsmi.org)



METHODIST  
**Children's Home**  
SOCIETY

26645 W. Six Mile Rd.  
Redford, MI 48240

[mchsmi.org](http://mchsmi.org) | 313-531-4060 | [info@mchsmi.org](mailto:info@mchsmi.org)  
[facebook.com/MethodistChildrensHomeSociety](https://facebook.com/MethodistChildrensHomeSociety)